



COREL™
DESIGNER®
Professional SG™

Reviewer's Guide

Product specifications, pricing, packaging, technical support and information (“Specifications”) refer to the United States retail English version only. The United States retail version is available only within North America and is not for export. Specifications for all other versions (including language versions and versions available outside of North America) may vary.

INFORMATION IS PROVIDED BY COREL ON AN “AS IS” BASIS, WITHOUT ANY OTHER WARRANTIES OR CONDITIONS, EXPRESS OR IMPLIED, INCLUDING, BUT NOT LIMITED TO, WARRANTIES OF MERCHANTABILITY, SATISFACTORY QUALITY, MERCHANTABILITY OR FITNESS FOR A PARTICULAR PURPOSE, OR THOSE ARISING BY LAW, STATUTE, USAGE OF TRADE, COURSE OF DEALING OR OTHERWISE. THE ENTIRE RISK AS TO THE RESULTS OF THE INFORMATION PROVIDED OR ITS USE IS ASSUMED BY YOU. COREL SHALL HAVE NO LIABILITY TO YOU OR ANY OTHER PERSON OR ENTITY FOR ANY INDIRECT, INCIDENTAL, SPECIAL, OR CONSEQUENTIAL DAMAGES WHATSOEVER, INCLUDING, BUT NOT LIMITED TO, LOSS OF REVENUE OR PROFIT, LOST OR DAMAGED DATA OR OTHER COMMERCIAL OR ECONOMIC LOSS, EVEN IF COREL HAS BEEN ADVISED OF THE POSSIBILITY OF SUCH DAMAGES, OR THEY ARE FORESEEABLE. COREL IS ALSO NOT LIABLE FOR ANY CLAIMS MADE BY ANY THIRD PARTY. COREL’S MAXIMUM AGGREGATE LIABILITY TO YOU SHALL NOT EXCEED THE COSTS PAID BY YOU TO PURCHASE THE MATERIALS. SOME STATES/COUNTRIES DO NOT ALLOW EXCLUSIONS OR LIMITATIONS OF LIABILITY FOR CONSEQUENTIAL OR INCIDENTAL DAMAGES, SO THE ABOVE LIMITATIONS MAY NOT APPLY TO YOU.

February 2004

© 2004 Corel Corporation. All rights reserved.

Corel, Corel DESIGNER, CorelDRAW, CorelTRACE and the Corel logo are trademarks or registered trademarks of Corel Corporation and/or its subsidiaries in Canada, the U.S. and/or other countries. Microsoft, Windows and Visual Basic are registered trademarks of Microsoft Corporation in the U.S. and/or other countries. Pentium is a registered trademark of Intel Corporation. PostScript is a registered trademark of Adobe Systems Incorporated in the U.S. and/or other countries. Other product, font and company names and logos may be trademarks or registered trademarks of their respective companies.

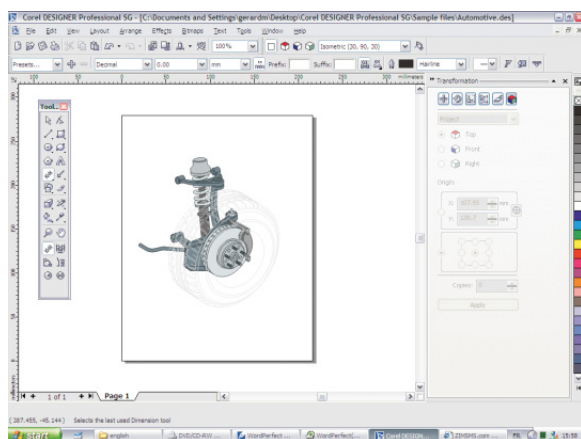
Contents

Introducing Corel DESIGNER Professional SG	1
Maximizing data integrity	1
High-end, specialized, precision drawing tools.....	1
Fully customizable and scriptable environment	1
Industry-standard templates and symbols	1
 A walkthrough of Corel DESIGNER Professional SG	 2
 New and advanced features.....	 7
Maximizing data integrity.....	7
High-end, specialized, precision drawing tools.....	10
Fully customizable and scriptable environment	15
Customization.....	15
Automation	15
Language Switching.....	15
Industry-standard templates and symbols.....	16
Additional features and benefits.....	16
 What's in the box.....	 20
Main application	20
Supporting utilities	20
Documentation	20
User guide	21
Quick Reference card	21
Online Help.....	21
VBA Programming Guide	21
Network Administrator Guide	21
Symbols and templates	21
 System requirements.....	 21
 Product activation	 21
 Corel technical illustration software matrix.....	 22
 Corel corporate profile.....	 23

Introducing Corel DESIGNER® Professional SG™

Corel DESIGNER® Professional SG™ combines sophisticated technical illustration tools—including the ability to manipulate 3D CAD drawings—with intuitive capabilities, allowing you to produce complex, highly accurate yet easy-to-read technical drawings.

Specifically designed for high-end technical illustrators who require professional drawing tools and industry-standard file compatibility (vector, bitmap and 3D), Corel DESIGNER Professional SG includes all the required functionality to integrate smoothly into your workflow. Unlike CAD applications, it delivers specialized illustration tools along with the ability to handle 3D drawings.



Part of the CorelDRAW® family of products, Corel DESIGNER Professional SG is fully compatible with CorelDRAW Graphics Suite (up to version 12) and Corel DESIGNER (up to version 10), enabling seamless file exchange with other users.

Maximizing data integrity

Through high-quality import/export filters and direct support for professional 3D CAD file import, Corel DESIGNER Professional SG integrates seamlessly within the technical illustration workflow.

High-end, specialized, precision drawing tools

Functions such as Projected Drawing Mode and Virtual Segment Delete, or drawing aids like Dynamic Guides and Gravity Snapping, fulfill a technical illustrator's specific workflow requirements.

Fully customizable and scriptable environment

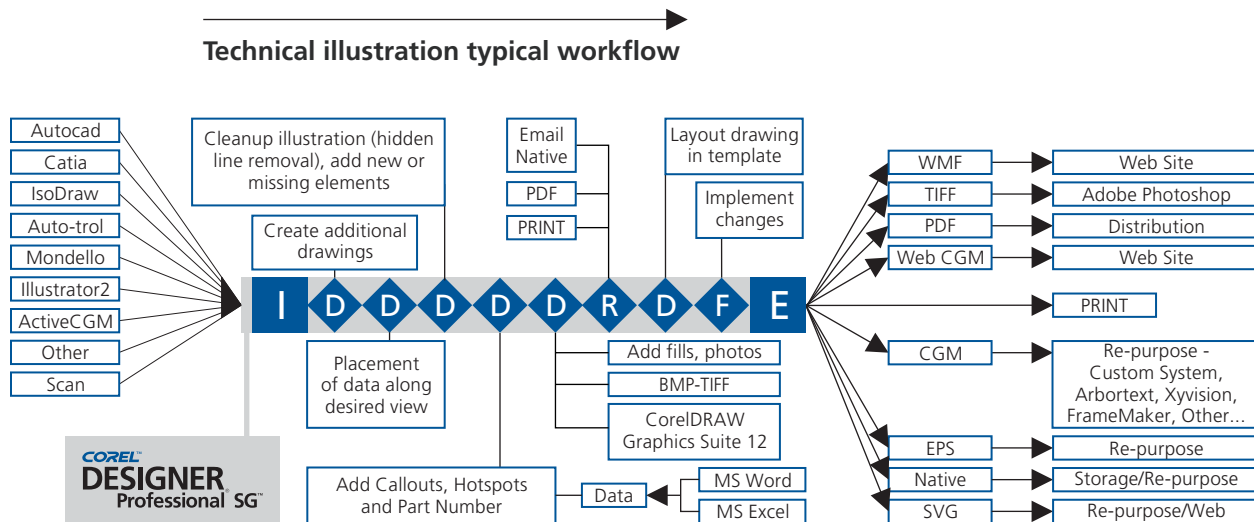
Your tool must adapt to your needs and requirements for an efficient workflow—not the other way around. The ability to automate repetitive tasks and customize the user interface streamlines your workflow. With a fully customizable environment, data and objects easily interact, enabling quick creation of complex technical illustrations that including hotspots.

Industry-standard templates and symbols

Corel DESIGNER Professional SG includes industry-standard templates and an extensive set of reusable symbols for manufacturing, electrical and architectural requirements. This allows you to reuse as much content as possible without having to reinvent the wheel for every illustration. You can also create, deploy and manage custom templates and symbols to standardize your workflow throughout your organization.

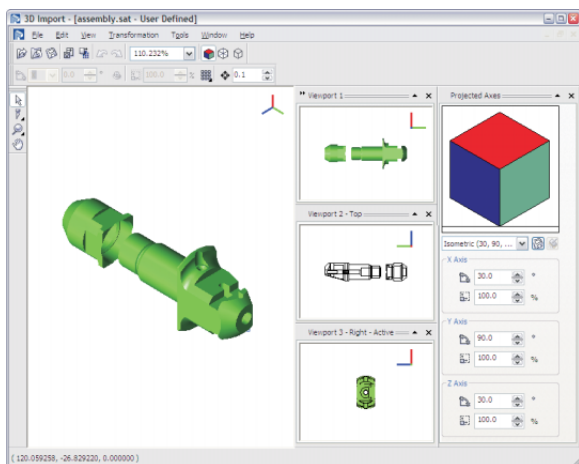
A walkthrough of Corel DESIGNER® Professional SG™

The process of creating a technical illustration is complex, often with different people, departments and companies interacting. Throughout the process, you must work with external data in various file formats.



I: Import / D: Design / R: Review / F: Finalize / E: Export

Importing data in numerous file formats

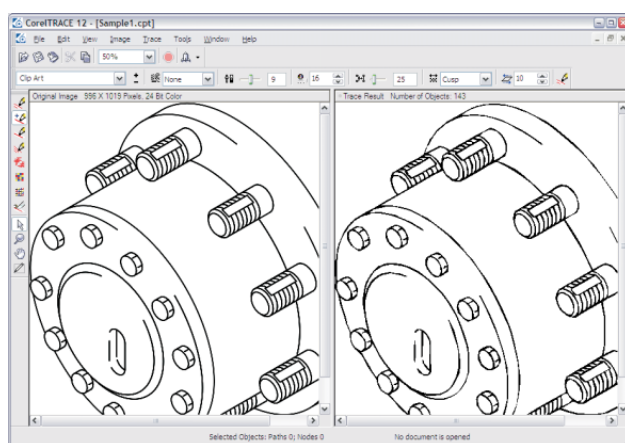


A technical illustration typically starts with data created in CAD software such as CATIA® or IGES. When working with these programs, you need to create and export desired views, which requires timely and costly CAD software training. You then have to switch to a different application for illustration features. The more data conversion required to get a CAD drawing into your technical illustration workflow, the bigger the chances are for imperfection. In addition, the technical illustration workflow requires you to work with numerous files in various formats.

To minimize data loss, Corel DESIGNER Professional SG supports more than 65 file formats through its import and export filters, including AutoCAD DXF® and DWG, Computer Graphics Metafile (CGM) 1 – 4 and profiles for GREX, WebCGM and ActiveCGM, Scalable Vector Graphics (SVG), Corel DESIGNER DSF/DES, InterCAP Mondello/NT DWG, Adobe® Illustrator® AI, Windows Bitmap BMP, Microsoft® Word DOC, Encapsulated PostScript (EPS), Microsoft® Visio® VSD, GIF, JPEG and TIFF.

Corel DESIGNER Professional SG also introduces the ability to directly open three-dimensional CAD drawings, including CATIA 4, CATIA 5, AutoCAD 2000, STEP, ProE, IGES and SAT formats. With integrated manipulation tools, you can rotate, position and cut the 3D file to a projected view without requiring a CAD software license. The corresponding isometric or customized projection can include hidden lines and thin/thick lines.

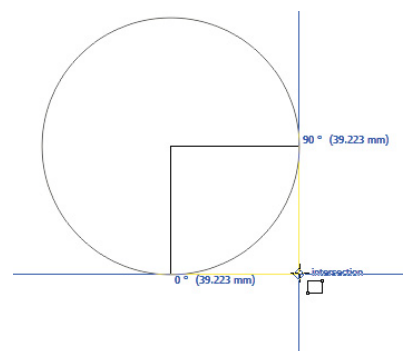
Converting data from paper to electronic format



Converting technical illustrations available only on paper into a reusable electronic format can be a long and difficult task. Usually this requires you to scan the document and draw the new objects over the imported image by hand. But now you can save significant time with CorelTRACE™ 12, a bitmap-to-vector tracing utility included in Corel DESIGNER Professional SG. This application automatically converts scanned or manually created bitmaps into vector images.

Ensuring accuracy throughout your technical illustration

Precision is everything—approximation is not an option for technical illustration. It's critical to your deadlines and workflow that you don't spend numerous hours zooming in and out to double-check exact positioning of different objects in a technical illustration. The same holds true for ensuring that objects are perfectly aligned with each other.

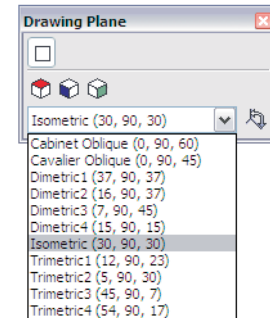


To help you create accurate technical illustrations with ease, Corel DESIGNER Professional SG includes Gravity snapping, the attraction of the pointer to a precise mathematical drawing coordinate; and Dynamic Guides, temporary guidelines that automatically appear, enabling accurate and fast positioning of an object in relation to others.

Interactive drawing tools and modes

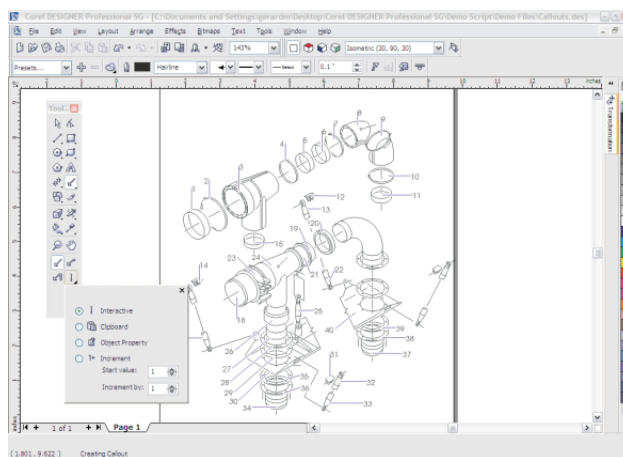
The technical illustration process requires specialized drawing tools to enable an effective and intuitive workflow. Creating projected drawings can be a long and complex job when tools are not produced with this in mind.

Corel DESIGNER Professional SG includes a Projected Drawing mode that allows you to draw directly in a selected projection (isometric, dimetric, trimetric, cavalier oblique, etc.).



Annotations, call-outs and measurements

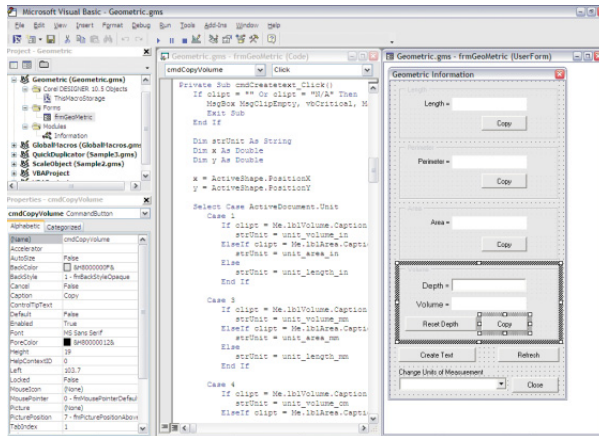
Technical illustration requires drawings to be detailed with annotations, call-outs and precise measurements. This includes information about product part numbers, links to other drawings and descriptions of functionality.



Corel DESIGNER Professional SG provides advanced features, such as a halo to any call-out (i.e., a mask behind the leader line of the call-out that makes it easier to see when the line is on top of another object). Call-outs can be with one, two or three line segments, and the information they display can be entered manually or taken automatically from data attached to the object. Dimension lines that detail precise measurements can be angular, horizontal, vertical and parallel. Corel DESIGNER Professional SG also includes surface and volume measurements.

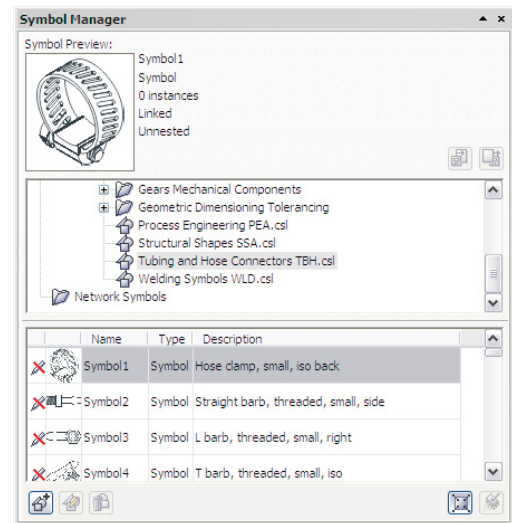
Automating repetitive tasks

Technical Illustrators often spend many hours doing repetitive tasks such as hot spotting, changing part numbers and creating parts lists. You also have to recreate industry-standard symbols for each drawing you create, requiring you to “reinvent the wheel” every time.



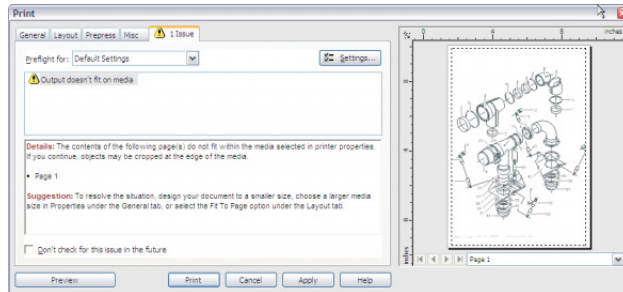
Corel DESIGNER Professional SG includes Microsoft® Visual Basic® for Applications (VBA) 6.3 to automate repetitive tasks and enable easy interaction between data and objects for creation of hot spots, parts lists, etc. You can also use VBA to create add-ons and extensions for Corel DESIGNER Professional SG, enabling your business to develop the tools needed specifically by your company's technical illustrators for a streamlined workflow.

Corel DESIGNER Professional SG also includes more than 4,000 industry-standard symbols to allow easy addition of screws, nuts, bolts and threading. You can create your own re-usable symbols and enable a corporate-wide network deployment. Drawings using a symbol that was modified can be automatically updated to reflect the change. In addition, Corel DESIGNER Professional SG offers standards-based templates (ANSI, ISO, DIN, etc.) to accelerate the work. You can also create or customize templates for symbols to speed up the process of adding and re-using objects.



Exporting technical illustrations into industry-standard formats

Once your technical illustration is finalized, it needs to be exported into an industry-standard format for easy deployment. Loss of data and information while exporting is not an option.

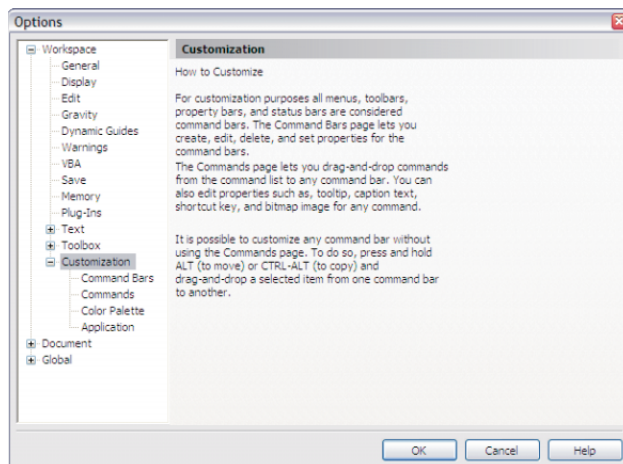


With more than 65 import/export filters, Corel DESIGNER Professional SG supports all the open standard formats. Export to WebCGM, Active CGM GREX-CGM (ATA) and SVG have been highly optimized, and you can view illustrations within your Web browser using Corel® ActiveCGM Browser and Corel® SVG Viewer, respectively.

Corel DESIGNER Professional SG also includes the ability to print or generate a PDF file from any technical illustration. Other features include advanced pre-flight capabilities to ensure the results are perfect the first time.

It's the tool that integrates the workflow, not the other way around

New software tools often require a long and difficult learning curve. They involve changes to your workflow and habits, giving the impression that it's the user who adapts to the tool, not the other way around.



Corel DESIGNER Professional SG offers a fully customized user interface so you can streamline your tools to match your workflow. You can quickly tailor the look and feel of the interface, and customize the application through VBA scripting.

Corel DESIGNER Professional SG also natively supports the Unicode text encoding format so you can easily work with multilingual documents. Dynamic Language Switching enables you to use this application in any of the supported

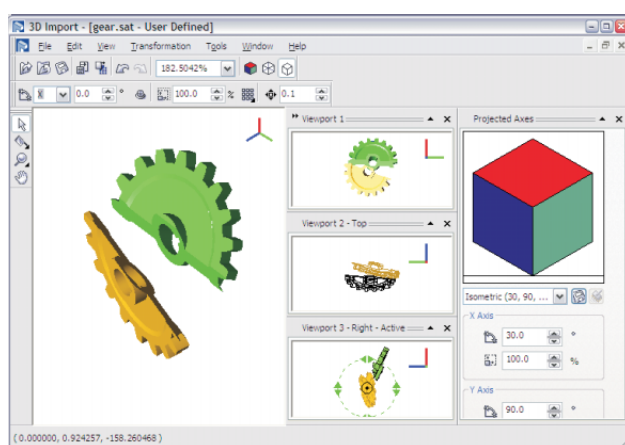
languages, minimizing the time and effort required by IT to deploy and maintain Corel DESIGNER Professional SG within the network environment.

New and advanced features

Maximizing data integrity

Through high-quality import/export filters and direct support for professional 3D CAD file import, Corel DESIGNER Professional SG ensures virtually no more loss of data.

3D Import



Corel DESIGNER Professional SG offers the unique ability to open a 3D vector file, rotate it to desired orientation, and freeze the 2D display at a specified orientation for import into the application for further editing.

3D Import file formats include:

- CATIA® 4
- AutoCAD® 2000
- ProE (version earlier than 2001)
- SAT
- CATIA 5
- STEP
- IGES

Within this mode you can:

- Select the file as a whole
- Interactively rotate the file to any precise rotation, with the ability to rotate using spin-control number boxes
- Constrain interactive rotation to X, Y and Z axes
- Move a model in any direction for precise placement
- Constrain moves to X, Y, and Z axes

- Change the view file while manipulating Wireframe, Hidden Line or Solid shading
- Create Thick Outline on export
- Zoom and pan
- Access a Status Bar report on cursor location
- Use the Slice tool or Chop tool on the selected file for cross sections
- Import other 3D files within the same view
- Coordinate status
- Create parallel projections
- Preset rotation profiles
- Work in Batch mode

*Location: **File | 3D import***

CGM support

Corel DESIGNER Professional SG supports Computer Graphics Metafiles (CGM) versions 1 to 4. GREX (ATA), WebCGM and ActiveCGM profiles were added to the import and export capabilities.

*Location: **File | Open/Import or Export***

Scalable Vector Graphics (SVG) support*

SVG is the open source future of graphics. An exciting new XML-based language, it allows designers and Web developers to create dynamic, high-quality graphics from real-time data.

Corel DESIGNER Professional SG includes advanced SVG compatibility, which makes it one of the best SVG authoring and editing applications for this powerful open standard file format. Some of the main enhancements include the following:

- Support for hot spotting and interactivity
- Import and export (both uncompressed and compressed SVGZ) are supported
- Inline CSS, external CSS and presentation attributes are all available styling options
- Symbols can be defined and re-used to optimize file size and consistency
- Font embedding and sub-setting options are included
- Linked and embedded images (PNG, JPG or GIF) are supported
- SVG preflighting on export – performs preflighting checks and warns you of potential problems with elements in your file before you export

- Various unit types are supported, including in., mm, cm and pixel
- Better SVG round-tripping – unrecognized data, attributes and metadata can be maintained on import and export
- Unicode SVG support – both UTF-8 and UTF-16 encoding methods
- Drawing precision adjustment at export time

2D Import/export

There are more than 65 types of import and export filters available in Corel DESIGNER Professional SG, including AutoCAD DXF and DWG, CGM 1 – 4 and profiles for GREX, WebCGM and ActiveCGM, Corel DESIGNER DSF/DES, Adobe Illustrator AI, Windows Bitmap BMP, Microsoft Word DOC, EPS, Macromedia Flash SWF, GIF, JPEG, SVG, Microsoft Visio VSD and TIFF.

*Location: **File | Open/Import or Export***

CorelTRACE™ 12

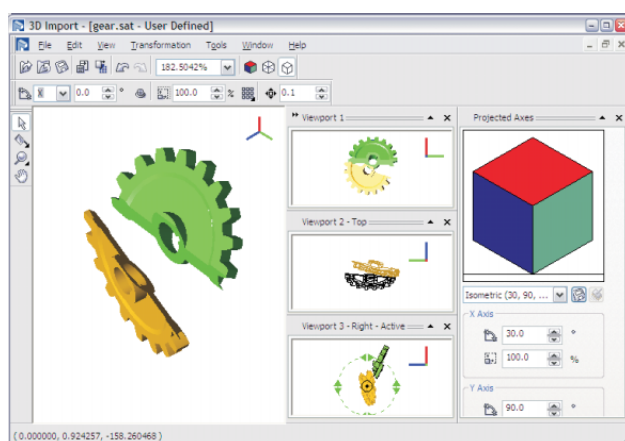
CorelTRACE 12 is a separate application that lets you convert bitmaps to vector graphics. It's useful for recreating a drawing that was scanned in from a paper source.

*Location: **Start | Programs | Corel DESIGNER Professional SG | CorelTRACE***

High-end, specialized, precision drawing tools

Corel DESIGNER Professional SG offers sophisticated precision drawing tools and aids for your specific workflow requirements.

Projected Drawing Mode



With this new mode, you can create drawings on a specified drawing plane. The Menu Bar offers preset pictorial drawing modes as well as an option to define view axes and scales. Once in an active plane, all tools correspond and function on the active plane. Grids and guidelines will also correspond to the active plane.

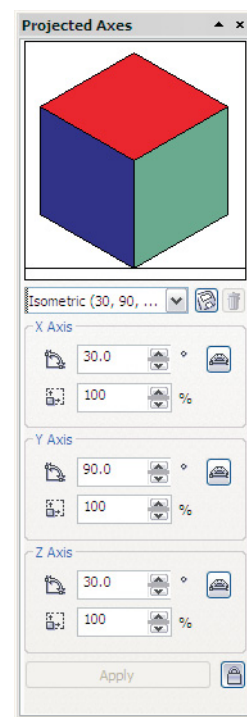
*Location: **View | Toolbars | Drawing Plane Toolbar***

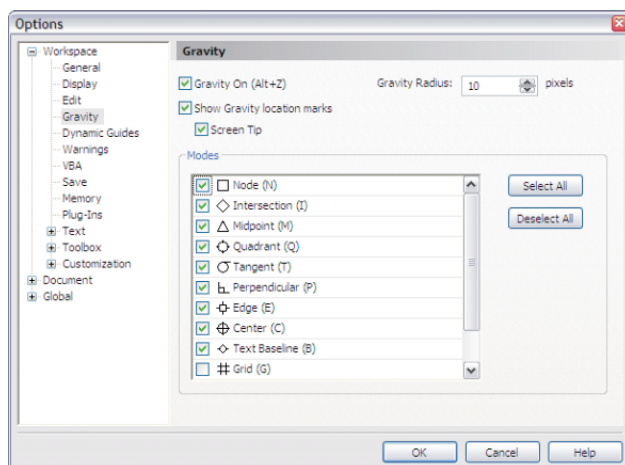
You can set up custom planes using the Projected Axis dockers by entering specific values or obtaining values using the User Specified Angle tool. Once you create custom planes, you can save them as presets for quick retrieval.

*Location: **Tools | Projected Axis Docker***

Gravity snapping

Gravity snapping enables precise pointer placement at any geometric location of nodes, grids, intersections, midpoints, center points, edges and absolute pointer location. Gravity does not pull the pointer; the pointer remains at its own location. Gravity displays the source to indicate where the pointer would snap to if specified. The pointer snaps to the gravity source on a click or, when specifying a secondary point, the click is released. Gravity keys temporarily

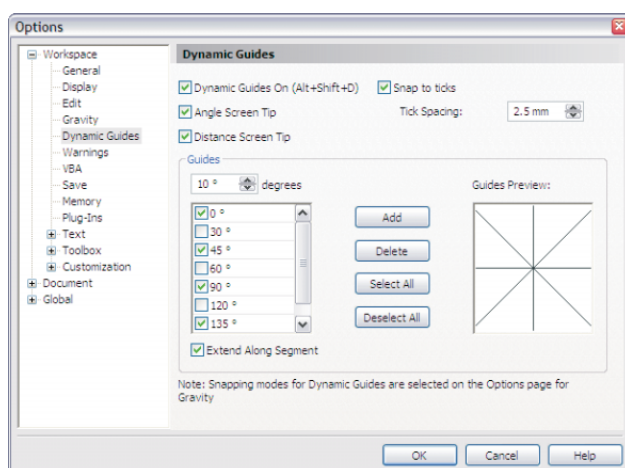




enable only the specified gravity type. Each gravity snap point has an associated shortcut Gravity key. Gravity keys temporarily disable all gravity types except the one specified by the key. Each gravity mode can be turned on or off in the Gravity dialog box.

*Location: **Tools | Gravity***

Dynamic Guides



The new Dynamic Guides feature works in conjunction with Gravity snapping functionality, allowing you to quickly and easily design and layout documents. When Dynamic Guides are turned on, you can pull temporary guides from the Node or Center snapping point of an object. Through the Options dialog box, you will be able to set the angles at which Dynamic Guides will be generated.

*Location: **Tools | Dynamic Guides Setup***

Object Data – Hot Spotting

The Object Data docker is re-designed to allow you to easily assign data to specific objects. The data displayed is now driven by an external XML file. When the data is in the docker, you can sort it based on high-level types, including General, ActiveCGM and WebCGM profiles. Available data can also be displayed by data types such as String (text), Number, Action and Behavior.

You can Select an object and check off which data you want associated with it. You can also modify the data directly within the docker or by using the Field Editor dialog box. When exporting files to CGM or SVG, data is sorted and stored according to the file format.

*Location: **Window | Object Data Manager Docker***

Virtual Segment Delete tool

Virtual Segment Delete provides a simple and efficient way to clean up a drawing. This tool removes segments between intersections and/or endpoints.

*Location: **Toolbox***

Callouts

Three callout options are available, with four text input options:

- **1-Leg Callout tool** – draw a callout with one leader line
- **2-Leg Callout tool** – draw a callout with a two-segment leader line
- **3-Leg Callout tool** – draw a callout with a three-segment leader line

Callout Text Input:

- Interactive text option
- Clipboard text option
- Object property text option
- Increment text option

*Location: **Toolbox***

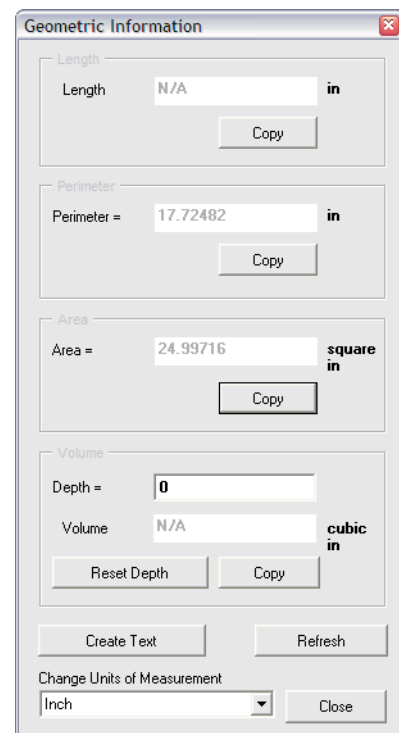


Dimensions

Six dimensioning tools are available:

- **Dimension tool** – draw horizontal or vertical dimension lines
- **Parallel dimension tool** – draw slanted dimension lines
- **Angular dimension tool** – draw angular dimension lines
- **Segment dimension tool** – measures linear distance between two most distant segment nodes
- **Radial dimension tool** – measures the radius of a circle or a partial circle, which is the distance from the circle center point to the circumference
- **Diameter dimension tool** – measures the diameter of a circle or a partial circle, which is the distance from the circle's circumference through the center point

*Location: **Toolbox***



Transformations

All transformations can be applied to the original object or to copies of the original. Six options are available:

- Move objects by user-specified angle and distance or specify the horizontal and vertical distances. Move objects by an offset distance.
- Rotate objects about a precise point; preserve the object's orientation or rotate with position.
- Scale an object to a percentage or to fit within a specified area.
- Flip or mirror objects.
- Skew objects horizontally or vertically.
- Project and unproject objects onto an isometric plane.

*Location: **Window | Transformations Docker***

Drawing Tools

The following basic drawing tools are designed to appeal to technical users:

- **2-point line tool** – draw a straight two-point line segment.
- **Multi-point line tool** – draw lines and curves one segment at a time in Preview mode.
- **Bézier curve tool** – draw curves one segment at a time.
- **Freehand curve tool** – draw single line segments and curves.
- **3-point curve tool** – draw a curve by defining the start, end and center points.
- **2-point connector line tool** – draw a straight two-point connector line.
- **Multi-point connector line tool** – join two objects with a multi-pointed line.
- **2-point rectangle tool** – draw a rectangle by dragging diagonally.
- **3-point rectangle tool** – draw a rectangle by dragging to set the height and width.
- **Center-point circle tool** – draw a circle by specifying the center and a point on the circumference.
- **Center-radius circle tool** – draw a circle by specifying a value for the radius and then clicking where you want the center to be.
- **3-point circle tool** – draw a circle by specifying three points on the circumference.
- **2-point ellipse tool** – draw an ellipse by dragging diagonally.
- **3-point ellipse tool** – draw an ellipse by dragging the centerline and specifying the width.
- **Center-point polygon tool** – draw a polygon by dragging from the center to a point (vertex) on the polygon.
- **Basic shapes tool** – draw shapes such as triangles and parallelograms.
- **Arrow shapes tool** – draw arrows of various shapes.
- **Flowchart shapes tool** – draw several standard flowchart shapes.
- **Miscellaneous shapes tool** – draw ribbon objects and explosion shapes.

*Location: **Toolbox**. Tools are organized into groups and “sub-tools” will appear in the flydown at the bottom of the toolbox.*



Eyedropper and Paintbucket tools

The enhanced Eyedropper tool gives you an extensive list of properties that you can copy from one object to another. For example, you can now copy outline properties, fill properties, size, position and effects with the Eyedropper tool, and apply them to other objects with one mouse click using the Paintbucket tool. To toggle between Select Color or Object Properties, use the drop-down list box on the new Eyedropper tool Property Bar. If you are selecting a color, click the Select Desktop button to select a color from anywhere on the screen.

Location: **Toolbox**

Convert objects

Using the Join Curves feature, you can, with a single operation, join multiple curve objects to form a single curve object. Only the end points of curves will be considered in the joining process; interior points will be maintained and cannot be joined. Endpoints of selected geometry must be within the user-specified tolerance to be joined. This feature resolves a common import problem where shapes are broken down to individual segments.

With the Convert to Ellipse feature, the original curve selected to be converted to an ellipse shape must somewhat resemble an ellipse. This feature resolves a common import problem where arcs are broken down to curves or individual segments.

Location: **Arrange Menu**

Boundary

You can draw exterior or interior boundaries automatically. The shrink-wrap boundary contours simple to complex shapes creating a separate single curve that can be filled or modified as any other closed curve object.

Location: **Window | Shaping Docker | First Item in drop-down**

Equal Divide

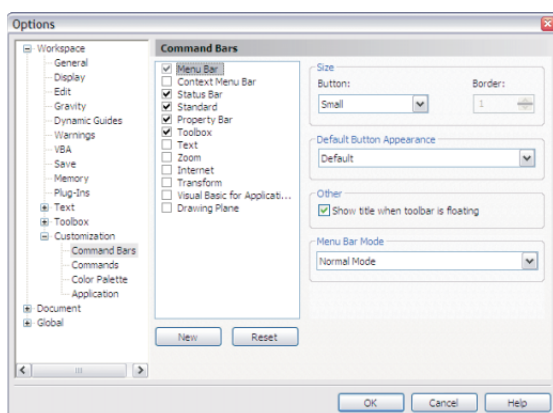
The Divide tool is a new shaping tool that divides objects equally. This feature actually creates gaps by removing parts of the object resulting in a divided object. If more than one object is selected, each one is individually divided in equal parts according to your specified number of divisions and gap distance. A gap can equal zero. The maximum gap depends on the resulting curve length.

Location: **Window | Shaping Docker**

Fully customizable and scriptable environment

With a fully customizable and scriptable environment, data and objects easily interact for quick creation of hotspots, part lists and more.

Customization



Easily customize your application by arranging command bars and commands to suit your needs. Command bars include the Menu Bar, toolbars, Property Bar and Status Bar. At any time, you can drag and drop controls within your workspace.

Once you have customized your application, you can save it as a workspace for quick access. Flip between different workspaces and share them with team members by importing and exporting.

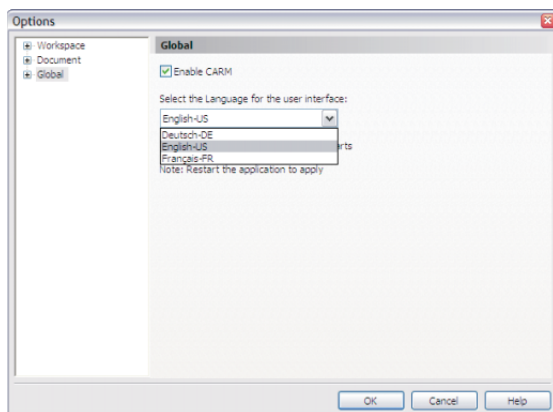
*Location: **Tools | Customization...***

Automation

An object-oriented programming language, Microsoft Visual Basic for Applications lets you create macros to automate tasks. You can create custom solutions for Corel DESIGNER Professional SG that automate and extend application functionality, integrate with other applications and shorten the development cycle of custom business solutions.

*Location: **Tools | Visual Basic***

Dynamic Language Switching



The installation process will prompt you for the languages you want to install from those available on the application CD. If you select more than one language during installation, you will be prompted with the Select Language dialog box the first time you run the application. Selecting the language will set the default for the user interface, Help, samples, tutorials, etc. To avoid being prompted again, you can enable the option to always use this language. This option is present in the event that users share logins on a single machine.

Industry-standard templates and symbols

Industry-standard templates and an extensive set of reusable symbols for manufacturing, electrical and architectural requirements save you valuable time.

Symbols

Symbols are graphics that are defined once and can be referenced many times in a drawing. Using symbols for objects that appear multiple times helps reduce file size as well as design time.

Corel DESIGNER Professional SG also supports Linked Symbols. Link to symbols that have already been created, or create objects and save them as internal symbols within a document. Symbols that you link to are stored in library files with a CSL filename extension and can be shared across your organization's network. You can easily manage the status of linked symbols with the Link Manager Docker window.

Location: **Window | Symbol Manager Docker or Edit | Symbols**

Additional features and benefits

Unicode

In previous versions of Corel DESIGNER, text input was ASCII based. This means that all areas in the application stored text as one of 256 characters (except for Asian text), limiting the portability of the files when moving around the world. Now, all text entered into Corel DESIGNER Professional SG is Unicode based, so text entered on an English system will display correctly on a Czech, Greek or Asian operating system.

Encode

Before Corel DESIGNER provided Unicode support, developers had to map text in and out of operating system code pages. This meant that if someone created a file in Czech on Windows®, then opened it in German on Windows, there was a good possibility that the text would not show in Cyrillic characters. In addition, importing text files from ASCII sources could render files useless if they were authored using systems with different language support than the language used during file import. In addition to adding a Code Page drop-down list box in the Open and Import dialog boxes, Encode support now gives you a way to fix text that comes into the application and displays incorrectly.

Encode allows you to map text from its current Unicode character values back to ASCII, then into the proper Unicode ranges. To do this, select Other Encoding from the radio buttons in the Text Encoding dialog box, then select the Code Page to which you want to convert. The Preview window will let you see the text so you can check the appearance of it before you commit to the changes.

Panose Font Matching

Panose font matching now has an option to filter fonts to only show those that map to the same Code Page as the text in the document. For example, if you had Greek text in your document and opened it on a system that didn't have that particular Greek font, it would be useless to highlight a Western font. A new option filters the list on default so it shows fonts on the same Code Page in which the text was created. This can be disabled to show all fonts on all Code Pages if you know that a font does enumerate on a specific Code Page.

Double byte formatting (Asian text)

The text engine now allows you to apply Asian and Latin fonts to Asian text from the Property Bar while only applying the Asian text to the proper characters. This functionality was previously available in the Format Text dialog box.

Text

Choose from two types of text—artistic and paragraph—both of which have extensive capabilities. When you apply vector effects to artistic text, you can still edit the text without having to reapply the effect. You can also place artistic text along any path.

To ensure the highest quality in your technical documents, Corel DESIGNER Professional SG also provides Writing tools, including Spell checking, Grammar and Thesaurus.

*Location: **Toolbox for tools, Text menu for options***

Vector effects

Interactive tools make it easy to add and update effects such as drop shadows, blends, transparencies, envelopes, extrusions and contours. All of these effects are live, so when you edit the original object, the effect updates in real time.

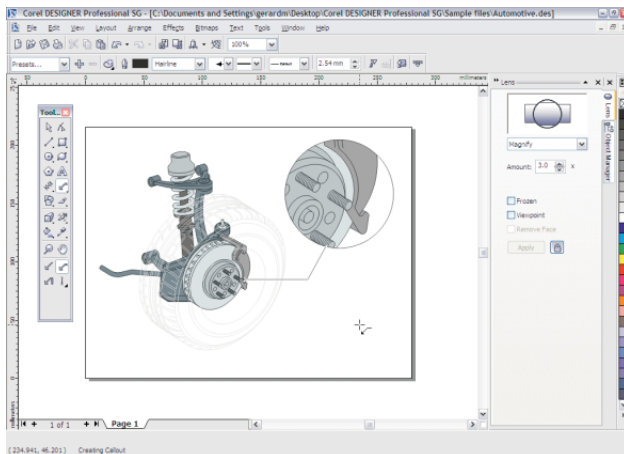
*Location: **Toolbox***

A PowerClip allows you to place any object or objects inside another object. Once placed, you can edit the contents at any time.

*Location: **Effects | PowerClips***

Linear patterns allow you to spray and brush objects along a path. You can easily create and save your own patterns.

Location: Toolbox



Lenses, which allow you to apply effects to existing objects, include magnify, transparency and wireframe.

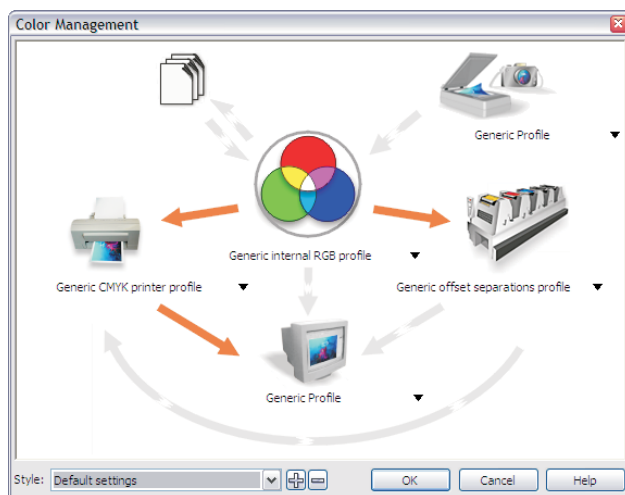
*Location: **Window | Lens Docker***

Raster support

Easily convert vector objects into bitmaps, or import and modify existing bitmaps. If you need extensive bitmap editing support, double-click a bitmap to launch the photo-editing software installed on your computer.

*Location: **Bitmaps menu***

Color and color management



Choose and create colors using a wide variety of industry-standard palettes, color mixers and color models. You can create and edit custom color palettes to store frequently used colors for future use. Plus, customize how color palettes display on your screen by changing the size of swatches, the number of rows in palettes and other properties.

*Location: **Window***

Color management has never been so easy! Now you can set up your workflow and attach ICC profiles all within one dialog box.

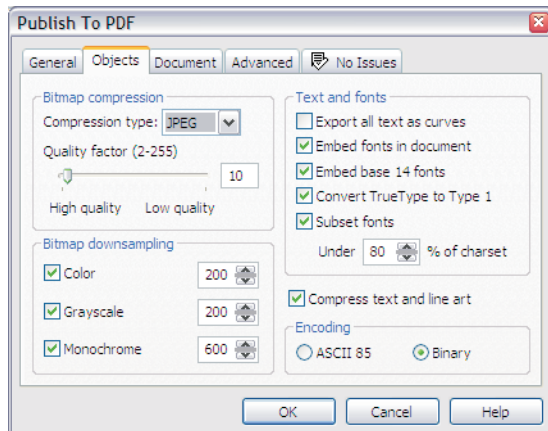
*Location: **Tools | Color Management...***

Printing

Many advanced printing options, such as prepress registration marks, PostScript® optimization and document preview, are available on the tabs within the Print dialog box. The Preflight tab will highlight potential problems and display warnings and suggestions for corrections to help ensure that your print job is correct.

*Location: **File | Print...***

Publish to PDF



Advanced PDF options are in the Settings dialog box, including Preflight warnings that highlight potential problems and provide suggestions for corrective action. Save settings as presets for future use to save time and ensure accuracy.

*Location: **File | Publish to PDF***

Publish to the Web

There are three options for publishing to the Web: HTML, Macromedia Flash™ SWF embedded in HTML, and the Web Image Optimizer. Each option makes it easy to publish your entire document or individual objects to the Web.

*Location: **File | Publish to the Web***

What Comes with Corel DESIGNER® Professional SG™

Main application

Corel DESIGNER Professional SG

Corel DESIGNER Professional SG combines sophisticated technical illustration tools, including the ability to manipulate 3D CAD drawings, with easy-to-use functions, allowing you to produce complex, highly accurate yet easy-to-read technical drawings.

Supporting utilities

CorelTRACE™ 12

CorelTRACE 12 is a bitmap-to-vector tracing utility that converts scanned or manually created bitmaps into vector images. Using TWAIN-compatible scanning devices, it lets you scan images and convert them to vector formats that you can edit and enhance in Corel DESIGNER Professional SG.

Microsoft® Visual Basic® for Applications (VBA) 6.3

An object-oriented programming language, VBA lets you create macros to automate tasks. You can create custom solutions within Corel DESIGNER Professional SG that automate and extend application functionality, integrate with other applications and shorten the development cycle of custom business solutions.

Mondello/NT to DESIGNER Professional SG conversion utility

The Mondello conversion utility enables Mondello/NT users to easily import existing technical illustrations into Corel DESIGNER Professional SG. The ability to seamlessly import Mondello DWG files provides an easy migration to your new software solution. This feature requires Mondello/NT to be installed on the same workstation as Corel DESIGNER Professional SG.

Documentation

User Guide

Corel DESIGNER Professional SG includes a comprehensive user guide that provides conceptual and procedural information about the applications. This guide is available in PDF format in English, French and German.

Quick Reference card

The Quick Reference card in Corel DESIGNER Professional SG provides you with easy access to application tools, icons, functionality and shortcut keys. This card is available in PDF format in English, French and German.

Online Help

You can find answers to common questions, detailed reference information and step-by-step procedural information about Corel DESIGNER Professional SG by using the Help feature in English, French or German.

VBA Programming Guide

The new Visual Basic for Applications Programming Guide for Corel DESIGNER Professional SG will help you automate tasks and create custom solutions using VBA 6.3. The guide is accessible from a link in Corel DESIGNER Professional SG VBA Help and is available in PDF format in English.

Network Administrator Guide

Corel DESIGNER Professional SG includes a comprehensive Network Administrator Guide that provides detailed installation and deployment information. This guide is available in PDF format in English.

Symbols and templates

Corel DESIGNER Professional SG ships with thousands of industry-standard symbols and templates, including ANSI, DIN, ISO, manufacturing, engineering and architectural templates, and architectural, electrical, general and mechanical symbols.

System requirements

- Windows® 2000 with latest SP or Windows XP with latest SP (Home, Professional or Tablet PC Edition)
- Pentium® II, 200 MHz or greater
- 128 MB RAM (256 MB recommended for 3D Import)
- 1024 x 768 screen resolution (768 x 1024 on a Tablet PC)
- CD-ROM drive
- 800 MB hard disk space to install all three language packs with all content
- Microsoft® Internet Explorer 5.5 or higher
- Mouse or tablet

Product activation

Corel DESIGNER Professional SG requires the software and each 3D filter purchased to be activated separately to guarantee product authenticity. Only those filters that are activated will be available in the 3D Import dialog box.

Corel Technical Illustration Software Matrix

	Corel DESIGNER® Professional SG™	Corel DESIGNER 10	Corel Mondello/NT	Corel® Active CGM Author 7.1
3D Import and manipulation	NEW			
2D Import/Export file types	Over 65 file formats	Over 65 file formats	4 file formats	Over 15 file formats
Projected Drawing mode	NEW		✓	✓ (Isometric only)
Hot spotting – object data	Enhanced	✓ (Limited)		✓
CGM v3 + v4 Support (GREX ATA, WebCGM, ActiveCGM)	NEW	✓ (Version 3 only)	✓	✓
SVG support	Enhanced	✓		
Dynamic Guides	NEW			
Gravity snapping	Enhanced	✓	✓	✓
Transformation docker	Enhanced	✓		
Advanced drawing tools	✓	✓	✓	
Call-outs	Enhanced	✓	✓	✓
Dimensions	Enhanced	✓	✓	
Transformations	✓	✓	✓	✓
Virtual Segment Delete tool	✓	✓	✓	✓
Convert objects	✓	✓	✓	✓
Boundary	✓	✓	✓ (Partial)	
Equal Divide	✓	✓	✓	
Symbols	✓	✓	✓	✓
Vector effects	✓	✓		
Raster support	✓	✓	✓	✓
Advanced text-editing features	Enhanced	✓		
Color and color management	✓	✓		
Advanced printing features	✓	✓		
Publish to the Web/Publish to PDF	✓	✓		
Customization	Enhanced	✓	✓	✓
Automation through VBA	✓	✓	✓ (Macro language)	
Panose Font Matching	✓	✓		
Language Switching	NEW			
Unicode support	NEW			
Double byte formatting (Asia text)	Enhanced	✓		Limited
CorelTRACE™ 12	✓	✓		

Corel Corporate Profile

Corel provides innovative software solutions and services that help millions of customers worldwide improve their productivity. Founded in 1985, the Company is best known for its leading graphics and office productivity solutions, including CorelDRAW® and WordPerfect®. With its headquarters in Ottawa, Canada, Corel has offices around the globe.

*Ensure you have Corel SVG Viewer installed on your system.
This plug-in is available as a free download at www.corel.com/svgviewer.

COREL™
www.corel.com

Corel Corporation
1600 Carling Ave.
Ottawa, ON
Canada K1Z 8R7
Tel.: 1-613-728-8200
Fax: 1-613-728-9790

Corel UK Limited
Sapphire Court
Bell Street
Maidenhead
Berkshire SL6 1BU
United Kingdom
Tel.: +44(0) 1628 589800
Fax: +44(0) 1628 589801

Corel Inc.
8144 Walnut Hill Ln.
Suite 1050
Dallas, TX
U.S.A. 75231
Tel.: 1-469-232-1000
Fax: 1-469-232-1194