

Corel Bar Code Generator

The Corel Bar Code Generator is used to create labelling for hard goods and equipment. On many labels a unique serial number is required in both arabic numerals and in bar code format. Depending on the customer, any one of several bar code formats may be required.

Prior to the implementation of this tool several manual processing steps were required to create each bar-coded label:

1. Duplicate and position the generic label template the required number of times.
2. Manually generate each bar code using a third party tool (the [B-Coder Professional](#) by [TALTech](#)).
3. Insert a bar code into the document.
4. Resize, rotate and position each bar code such that it appears on the correct label.
5. Edit any text representations of the bar code information on the current label.
6. Repeat steps 3-6 until all labels are created.

After implementation of the Corel Bar Code Generator tool, the above steps are completely automated. The generation of the individual bar code graphics are completed using the [TAL Bar Code ActiveX Control](#).

Method:

The user of this system creates a custom label which will contain the bar code and any automatically updated text fields. The bar code image labelled "Target" is a bitmapped image. This tells the bar code generator that this is an image to be replaced with the bar code. The token \$SER\$ will be replaced with a text representation of the serial number in each of the labels generated.

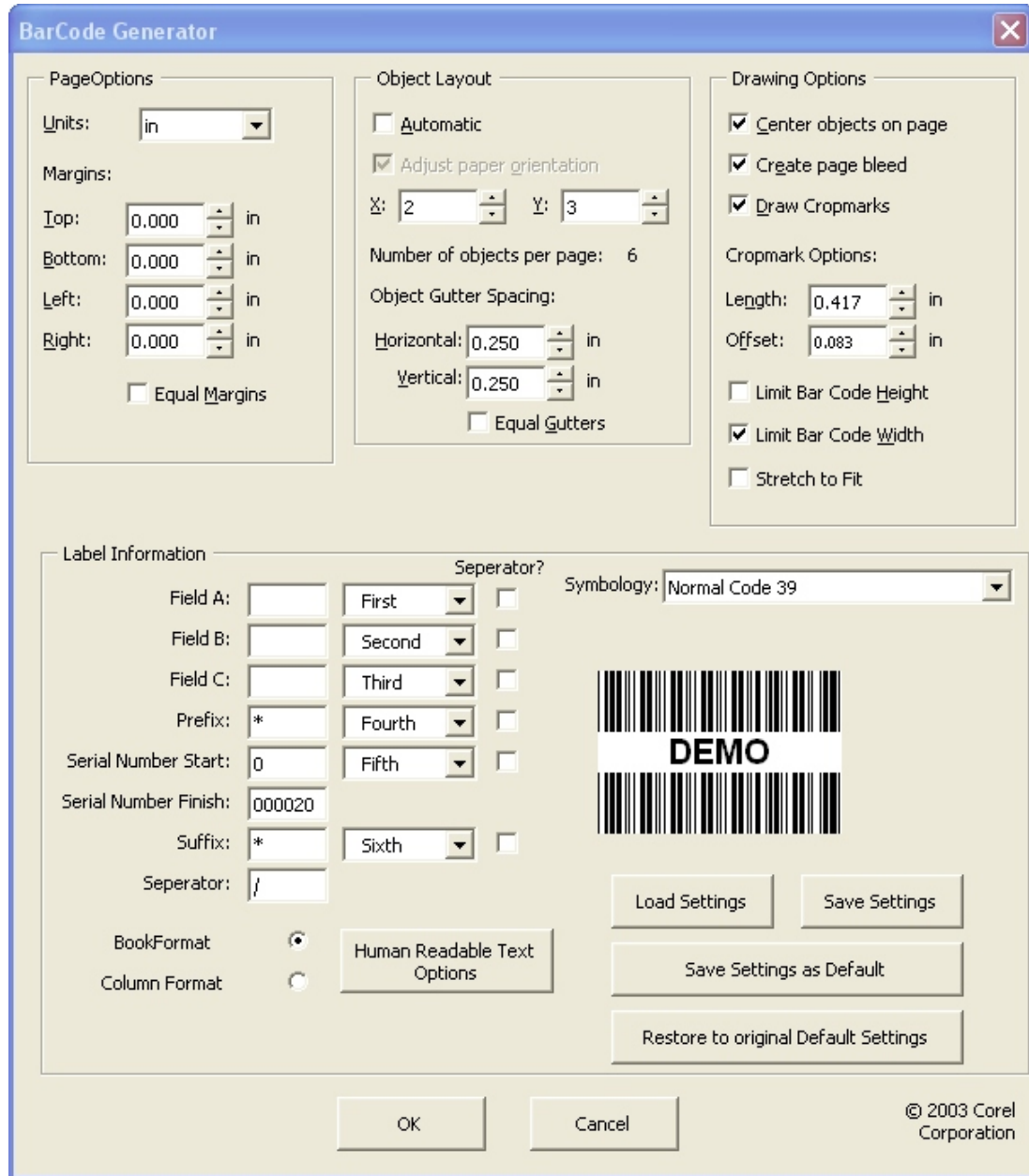


Features:

This tool provides a graphical interface which allows the user to choose the following. Some formatting specific options such as font size and type are specified in the label template as shown above.

1. Choose any bar code type and associated options for that type
2. Allow the user to choose size of desired code, height & width
3. Allow the user to select the Height and width of a single part (for calculation of step-out coordinates)
4. User selectable Location of the code field, on a single part
5. User selectable page margins
6. User selectable layout options including number of columns and rows of objects per page
7. User selectable gutter spacing between iterations of objects
8. User option of including a page bleed line and / or crop marks.
9. User option of how to stretch / resize bar code to fit into the label template.

10. User choice of "column format" or "book format" for the direction of the progress of the sequence. Option to have the system auto select the format based on optimal space usage.
11. Allow a static Start and finish sequence of code which will be the same on every label in the series. Allow static text fields to be reproduced on each label. This will allow one template to be used for several items. Eg. One template may be used with differing part numbers or types.
12. Start and stop sequence of code for only one sheet.
13. Allow a matching text field which provides a text representation of the code field with a choice of the font.
14. Create and fill pages as needed to complete the sequence of specified serial numbers.



Sample user Interface for Corel Bar Code Generator v2.13